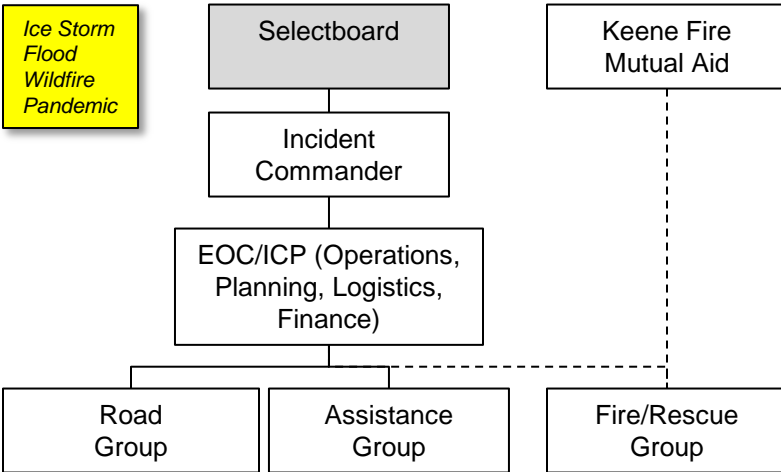


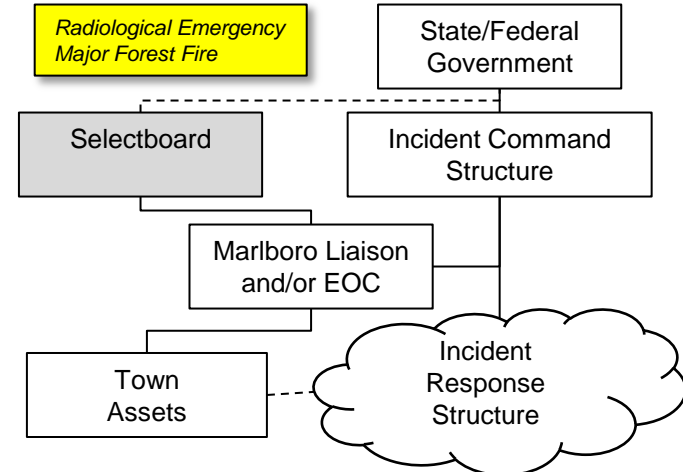
Emergency Management Structures

Type 3 (Town-Wide) Incidents



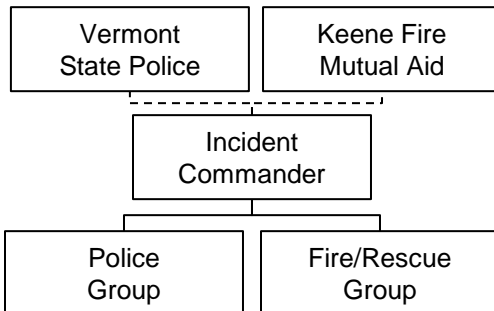
- o Selectboard appoints Incident Commander, stands up EOC/ICP
- o Incident Commander organizes town resources as required
- o Fire/Rescue works within regional mutual-aid structure

Type 2-1 (Regional) Incidents



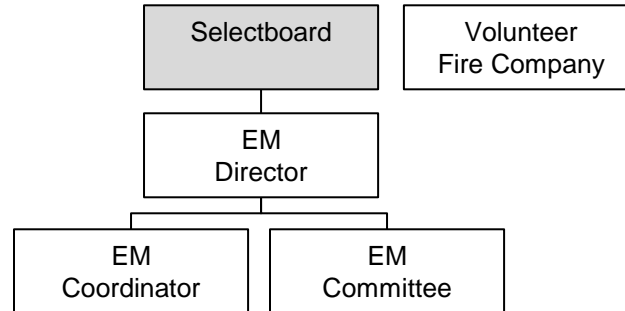
- o State or Federal organization leads combined response
- o Liaison coordinates local issues with Incident Commander
- o Most town resources work within larger structure

Type 5-4 Incidents



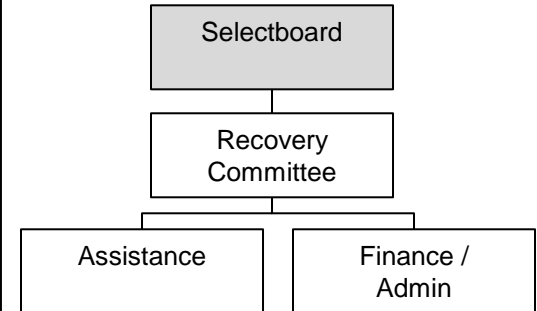
- o Emergency responders work together
- o No town-specific involvement

Non-Emergency



- o EM mission is primarily coordination and planning
- o Fire Company works with but is independent of town

Recovery



- o Selectboard appoints recovery committee
- o Committee organizes as required